

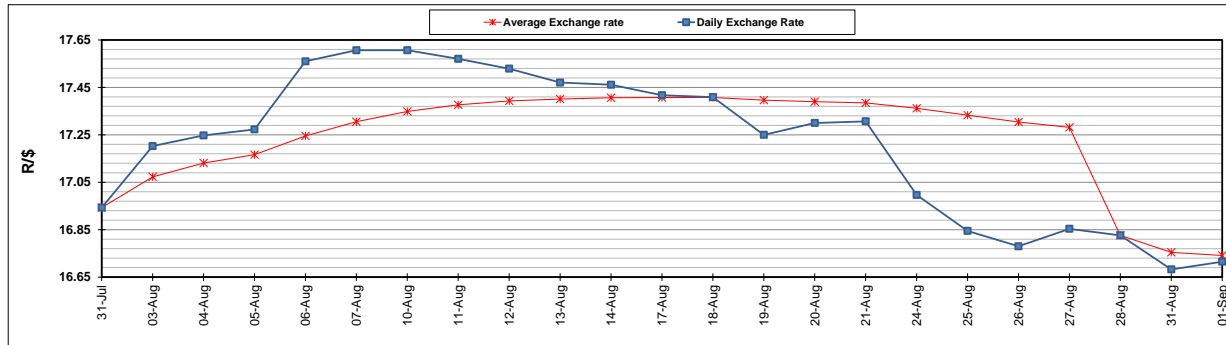
	PETROL 95 ULP	PETROL 93 ULP & LRP	DIESEL 0.05%	DIESEL 0.005%	ILL. PAR.
GAUTENG PUMP PRICE (SA c/l) AS FROM 02/09/2020	1,518.000	1,489.000	-	-	-
WHOLESALE PRICE (SA c/l) AS FROM 02/09/2020	-	-	1,327.560	1,331.960	716.828
SINGLE NATIONAL MAXIMUM RETAIL PRICE	-	-	-	-	899.000
BASIC FUEL PRICE - 01/09/2020 (SA c/l)	546.119	538.606	531.786	533.993	464.931
PRESS RELEASE CONTRIBUTION TO BFP 28/08/2020 - 01/09/2020 (SA c/l)	569.770	550.770	597.630	602.030	538.128
UNIT OVER/(UNDER) RECOVERY - 01/09/2020 (SA c/l)	23.651	12.164	65.844	68.037	73.197
AVERAGE BASIC FUEL PRICE 28/08/2020 - 01/09/2020	556.457	549.207	537.194	539.825	470.951
AVERAGE UNIT OVER/(UNDER) RECOVERY 28/08/2020 - 01/09/2020	13.313	1.563	60.436	62.205	67.177

ANALYSIS MOVEMENT OF AVERAGE OVER/(UNDER) RECOVERY

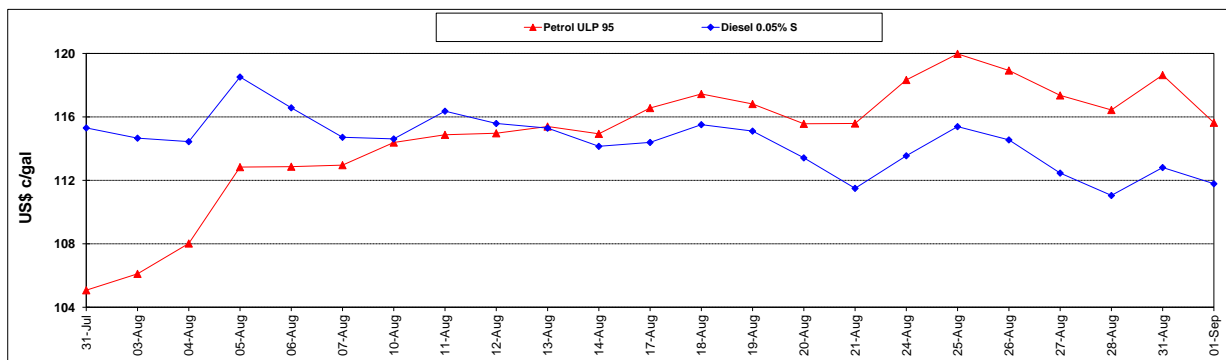
	PETROL 95	PETROL 93	DIESEL 0.05%	DIESEL 0.005%	ILL. PAR.
- MOVEMENT IN INTERNATIONAL PRODUCT PRICES	(4.643)	(16.159)	43.102	44.786	51.980
- MOVEMENT IN EXCHANGE RATE	17.956	17.722	17.334	17.419	15.197
AVERAGE UNIT OVER/(UNDER) RECOVERY 28/08/2020 - 01/09/2020	13.313	1.563	60.436	62.205	67.177

R/\$ EXCHANGE RATE - (R/\$16.7150 - 01/09/2020)

EXCHANGE RATE USED IN BASIC FUEL PRICE



INTERNATIONAL PRODUCT PRICES OF BASKET USED IN BASIC FUEL PRICE



BASIC FUEL PRICE IN SA CENTS PER LITRE

